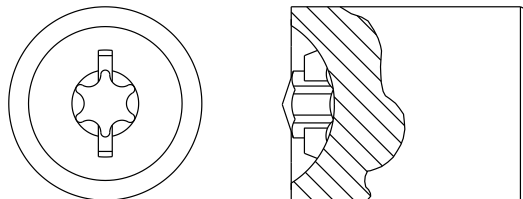


Flat Head

Part Number	Drive Size	A inch/mm	B inch/mm	Penetration inch/mm	OD inch/mm	Length inch/mm
RLP5 thru 9-FLH	5 thru 9			Specify	0.562/14.27	1.000/25.40
RLP10-FLH	10	.111/2.81	.081/2.05	Specify	0.562/14.27	1.000/25.40
RLP15-FLH	15	.132/3.35	.096/2.43	Specify	0.562/14.27	1.000/25.40
RLP20-FLH	20	.155/3.93	.112/2.85	Specify	0.562/14.27	1.000/25.40
RLP25-FLH	25	.178/4.53	.129/3.27	Specify	0.875/22.23	1.000/25.40
RLP27-FLH	27	.200/5.09	.144/3.67	Specify	0.875/22.23	1.000/25.40
RLP30-FLH	30	.221/5.62	.160/4.06	Specify	0.875/22.23	1.000/25.40
RLP40-FLH	40	.267/6.78	.192/4.89	Specify	0.875/22.23	1.000/25.40



Combination/Slotted Pan Head

Part Number	Drive Size	A inch/mm	B inch/mm	Penetration inch/mm	OD inch/mm	Length inch/mm
RLP7-SPH	7	.082/2.08	.060/1.52	0.031/.79	0.562/14.27	1.000/25.40
RLP8-SPH	8	.095/2.41	.069/1.75	0.041/1.04	0.562/14.27	1.000/25.40
RLP9-SPH	9	.102/2.59	.074/1.88	0.040/1.02	0.562/14.27	1.000/25.40
RLP10-SPH	10	.111/2.81	.081/2.05	0.051/1.30	0.562/14.27	1.000/25.40
RLP15-SPH	15	.132/3.35	.096/2.43	0.045/1.14	0.562/14.27	1.000/25.40
RLP20-SPH	20	.155/3.93	.112/2.85	0.060/1.52	0.562/14.27	1.000/25.40
RLP25-SPH	25	.178/4.53	.129/3.27	0.075/1.90	0.875/22.23	1.000/25.40
RLP27-SPH	27	.200/5.09	.144/3.67	0.075/1.90	0.875/22.23	1.000/25.40
RLP30-SPH	30	.221/5.62	.160/4.06	0.090/2.29	0.875/22.23	1.000/25.40
RLP40-SPH	40	.267/6.78	.192/4.89	0.110/2.79	0.875/22.23	1.000/25.40

1. Punch Materials M2 at 62-64RC

- M2 at 62-64 RC
- M42 at RC 63-65

2. Special Head Styles & Head Marking available per request.

3. PVD coating available for cold and hot heading.